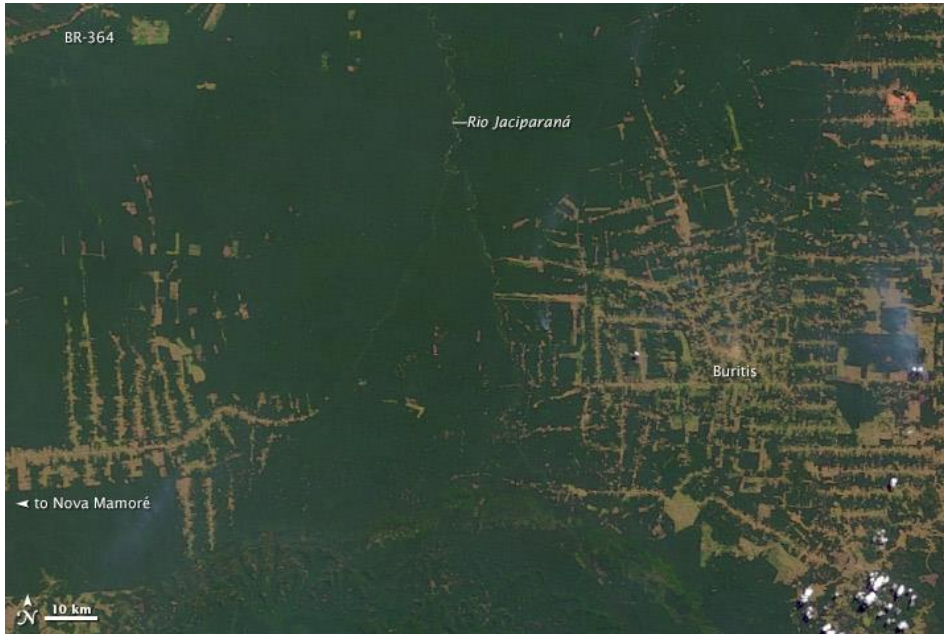


"World of Change: Amazon Deforestation", *NASA Earth Observatory*, Estados Unidos, 29 de enero de 2014.

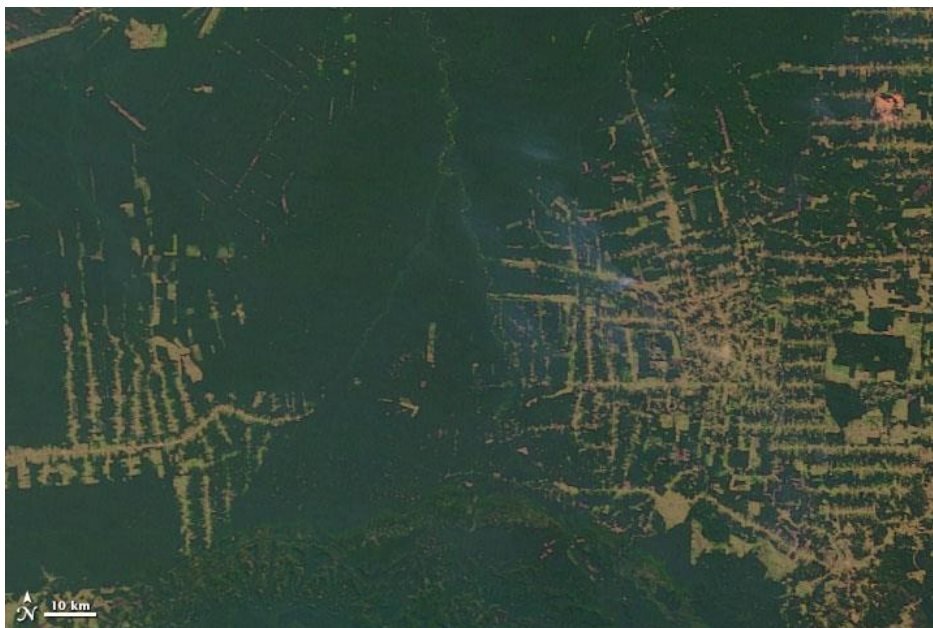
Consultado en:

<https://earthobservatory.nasa.gov/Features/WorldOfChange/deforestation.php>

Fecha de consulta: 18/06/2018.



30 de Julio de 2000



11 de Agosto de 2001



11 de Julio de 2002



21 de Julio de 2003



1 de Agosto de 2004



10 de Julio de 2005



17 de julio 2006



12 de Agosto de 2007



25 de Julio de 2008



21 de Agosto de 2009



2 de Agosto de 2010



5 de Agosto de 2011

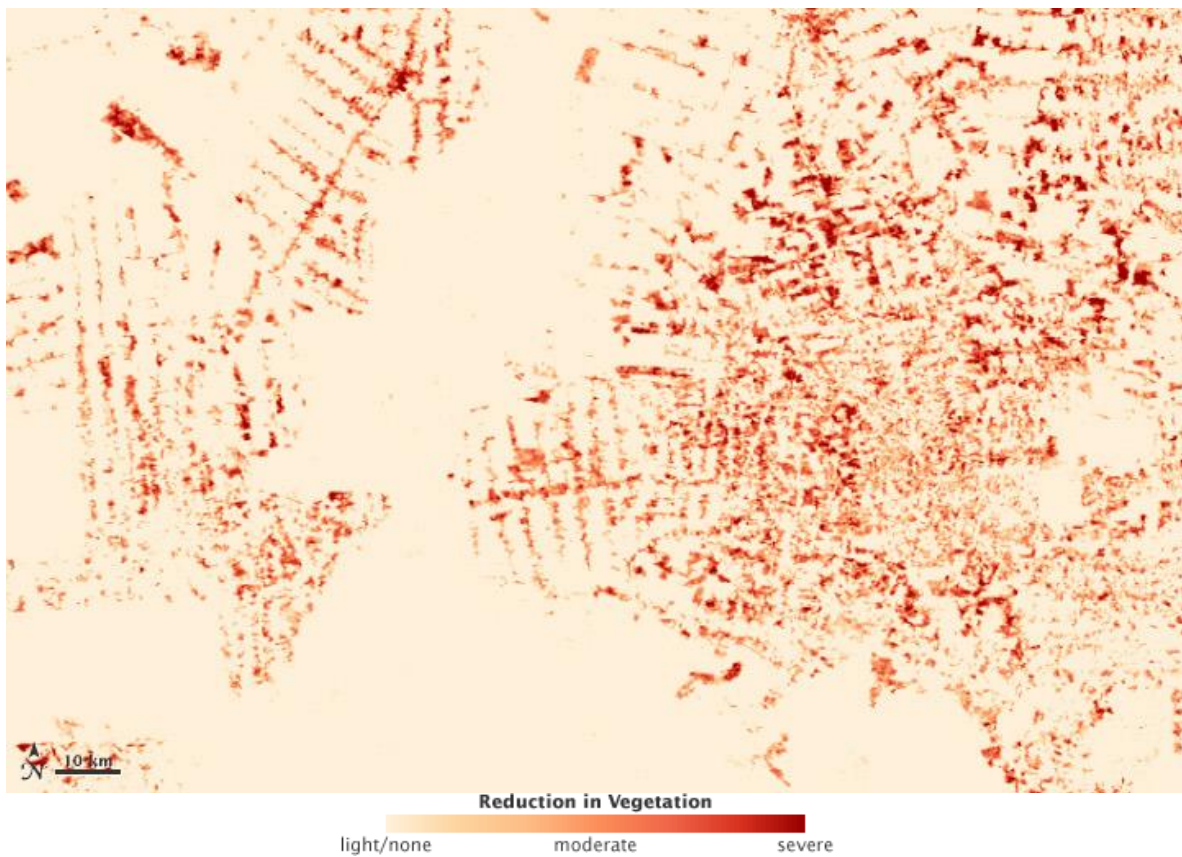


18 de Julio de 2012

The state of Rondônia in western Brazil — once home to 208,000 square kilometers of forest (about 51.4 million acres), an area slightly smaller than the state of Kansas — has become one of the most deforested parts of the Amazon. In the past three decades, clearing and degradation of the state’s forests have been rapid: 4,200 square kilometers cleared by 1978; 30,000 by 1988; and 53,300 by 1998. By 2003, an estimated 67,764 square kilometers of rainforest—an area larger than the state of West Virginia—had been cleared.

By the start of this satellite time series from the Moderate Resolution Imaging Spectroradiometer ([MODIS](#)) on NASA’s [Terra](#) satellite, the frontier had reached the remote northwest corner of Rondônia. Intact forest is deep green, while cleared areas are tan (bare ground) or light green (crops, pasture, or occasionally, second-growth forest). Over the span of 12 years, roads and clearings pushed west-northwest from Buritis toward the Jaciparaná River. The deforested area along the road into Nova Mamoré expanded north-northeast all the way to the BR-346 highway.

Deforestation follows a fairly predictable pattern in these images. The first clearings that appear in the forest are in a fishbone pattern, arrayed along the edges of roads. Over time, the fishbones collapse into a mixture of forest remnants, cleared areas, and settlements. This pattern follows one of the most common deforestation trajectories in the Amazon. Legal and illegal roads penetrate a remote part of the forest, and small farmers migrate to the area. They claim land along the road and clear some of it for crops. Within a few years, heavy rains and erosion deplete the soil, and crop yields fall. Farmers then convert the degraded land to cattle pasture, and clear more forest for crops. Eventually the small land holders, having cleared much of their land, sell it or abandon it to large cattle holders, who consolidate the plots into large areas of pasture.



The estimated change in forested area between 2000 and 2008 is shown in this map (above) based on [vegetation index](#) data from MODIS. Places that are red lost vegetation, while places that are peach showed little or no change. The most intensely red areas indicate the biggest vegetation losses—usually the complete clearing of original rainforest. Less intense

reds indicate less dramatic change, such as the complete clearing of an already logged forest, or a transition from leafy crops to sparser pasture grasses.

All major tropical forests—including those in the Americas, Africa, Southeast Asia, and Indonesia—are disappearing, mostly to make way for human food production, including livestock and crops. Although tropical deforestation meets some human needs, it also has profound, sometimes devastating, consequences, including social conflict and human rights abuses, extinction of plants and animals, and climate change—challenges that affect the whole world.

References

- Lindsey, R. (2007). [Tropical Deforestation](#). NASA's Earth Observatory. Accessed May 27, 2009.
- Pedlowski, M., Matricardi, E., Skole, D., Cameron, S., Chomentowski, W., Fernandes, C., and Lisboa, A. (2005). [Conservation units: a new deforestation frontier in the Amazonian state of Rondônia, Brazil](#). *Environmental Conservation*, 32 (2): 149–155.
- Pedlowski, M., Dale, V., Matricardi, E., and da Silva Filho, E. (1997). [Patterns and impacts of deforestation in Rondônia, Brazil](#). *Landscape and Urban Planning*, 38, 149–157.

Links

- [Images and Animation of Rondônia Deforestation 1975-2001](#) from the Goddard Space Flight Center Scientific Visualization Studio
- [Rondônia, Brazil](#), in the United Nations Environment Programme's Atlas of Our Changing Environment
- [Deforestation in Rondônia, Brazil](#)